

FREQUENTLY ASKED QUESTIONS

Will temperature checks and health screenings be required prior to entering the school?

Parents are required to perform daily health and screening checks at home prior to sending their students to schools, including ensuring a temperature below 100.4 99.5 using a contactless thermometer or 100.4 with a contact thermometer and no cold, cough, or flu-like symptoms. Staff is required to perform daily health and screening checks at home prior to coming on to campus. Individuals should stay home if they have had any symptoms related to COVID-19 within the past 10 days, which include flu-like symptoms such as fever, coughing or shortness of breath, chills, muscle or body pain, fatigue, headache, sore throat, nausea, or vomiting, diarrhea, congestion or runny nose, or new loss of taste or smell, or if they are subject to quarantine due to being in close contact with a COVID positive individual.

In addition, for the first 60 days of school, staff will conduct a “Wellness Welcome” with each student that includes a temperature check as they arrive at school. We will review and revisit this procedure and keep families apprised of any changes.

Who must wear masks and where must they be worn?

All staff and students must wear them while indoors. There will be areas outside that all staff and students will be required to wear them (e.g., lockers). When staff and students are outdoors in areas are not required, they should physically distance 3 feet or more in as much as possible.

Will there be social distancing requirements?

At this time no, specific social distancing requirements will not be required as long as other mitigation strategies (e.g. masks) are in place. In addition,

students will spread out during lunch and snack times. Our safety plan includes essential COVID mitigation measures such as mask-wearing, hand hygiene, regular disinfecting, high-grade ventilation systems, and more.

Will students be able to do Distance Learning if they don't feel comfortable being in person or if they have to quarantine?

There is not provision for “distance learning” unless the public health official orders a classroom or school to shut down. If students have to miss school they will be given make up work as is done during normal operations. The only alternative to in person instruction is the Digital Learning Academy which is our independent alternative we must offer this year for anyone that will be not attending in person instruction for 15 days or more.

Will TK-2nd grade have to use the individual clear study carrels?

These will not be required. However if a teacher requests them they will be available for them. There will continue to be plexiglass barriers in high traffic areas (e.g., front office counter).

Will there be handwashing/hand sanitizer routines?

Yes, handwashing and hand sanitizer routines will be in place.

Will there be cleaning and disinfecting taking place?

Enhanced cleaning schedules will continue to be implemented. Each classroom, restroom, lunch area, office, and bus will be fully cleaned each day. High-touch areas will be sanitized more frequently. Disinfection of rooms or surfaces will take place in the event of a possible or confirmed exposure.

Will there be testing and contact tracing?

Yes, in the event a student or staff member exhibits symptoms, there will be available testing through the County of Ventura, Expanded COVID-19 Testing, communication regarding potential exposures, and contact tracing. Quarantine and conditions for a student or staff member to return to campus will follow CDPH and local requirements.

What happens if a student or staff member tests positive for COVID-19, or comes into “Close Contact” with an individual with COVID?

The District will comply with all notification and quarantine protocols called for in the local county health order by Ventura County Public Health (VCPH) and the California Department of Public Health (CDPH) guidance.

It is important to note a recent change in guidance: Consistent with VCPH County Health Orders, fully vaccinated students and staff who come into close contact with a COVID-19 positive individual will not be required to quarantine at home, but instead will be able to remain in in-person instruction with certain conditions and mitigation measures in place

Will students be required to be vaccinated?

No, however, vaccination is the leading prevention strategy to protect individuals from the COVID-19 disease (CDC). Vaccinations are currently available for students ages 12 and up older and parents are encouraged to consult with their health providers in considering vaccinations for their children. Vaccination sites are available countywide

Will visitors be allowed at Schools/Facilities?

In the 2021-2022 school year, visitors will continue to be limited in schools. In-person meetings

may take place for parent conferences and other events (registrations, orientations, etc.), in which case face coverings will be required. We will implement a “Essential Visitor/Vendor” Safety Protocol for student enrichment and extracurricular activities.

Will the drinking fountains be operational?

No. We will maintain water bottle stations that will be cleaned daily. Students are encouraged to bring personal, labeled water bottles to refill.

What about school meals?

This year, we are excited to announce that all meals for students will be free and served on campus. Students will be able to eat lunch with their peers.

Will there be Sports, Band, Choir, Drama, and other Extracurricular Activities?

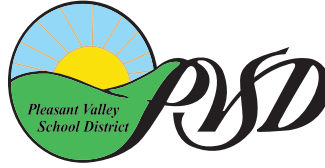
Yes, each school will have extracurricular activities this year. Schools will publicize specific COVID-19 protocols for all sports, band, choir, drama, and extracurricular programs.

How do we apply for the Digital Learning Academy?

You need to fill out an application that is found on our website “About Us” – “Enrollment and Registration” – “Application Information”. Then turn it into the Enrollment Office in the District. If there are spots available, you may be offered a spot. If there are not spots available, you will be put on a waitlist and if enough applications come in for your child's grade level, we will determine if we can open another class. Any applications after the first day of school will be totally based on space available as we will not be able to move staff around after the first day.

If you have any safety concerns, please contact your school office. These FAQs will be updated as guidance evolves.

CONTINUING COMMITMENT TO SAFETY



SAFETY ROUTINES IN ALIGNMENT WITH CALIFORNIA OF PUBLIC HEALTH



MASKS

- Masks are optional outdoors
- Masks must be worn indoors
- People with mask exemption must wear an alternative such as a face shield with a drape



PHYSICAL DISTANCING, CLEANING, HAND HYGIENE AND SANITIZING

- No physical distancing required when safety measures (e.g. masks) are in place
- Frequent disinfection continues
- Hand washing/Sanitizing routines in place
- Enhanced cleaning schedules will continue to be implemented. Each classroom, restroom, lunch area, office, and bus will be fully cleaned every day. Disinfecting surfaces will occur more frequently in high traffic areas or under conditions where there may be a higher risk of infection or transmission



QUARANTINE

- Close contact defined as within 0-6 feet for more than 15 minutes over a 24 hour period
- Fully vaccinated people do not have to quarantine if without symptoms
- People who were masked as a close contact may have a modified quarantine
- Quarantine is now based on 10 days



OTHER

- Eligible people are strongly encouraged to get vaccinated
- Additional guidance is coming for other supervised settings including activities such as band and drama
- Students who won't wear any face covering will be offered an educational alternative
- All district air conditioning and heating systems are set to maximize filtration and circulation and exchange fresh air at levels exceeding the recommended rate

A DAY IN THE LIFE



LENGTH OF DAY/ BELL SCHEDULES

*All students will return to a regular full day, onsite instructional schedule. Schools will operate following their pre-pandemic bell schedules available at www.pleasantvalleysd.org About PVSD => Schools and Boundaries.

*Except Digital Learning Academy



RECESS/NUTRITION AND PHYSICAL EDUCATION

Students will participate in recess & physical education, including use of shared equipment, and playgrounds following the latest public health guidelines. Mask wearing is optional when outside in most areas.



EXTRACURRICULAR ACTIVITIES

In-person extracurricular activities and events will return in accordance with the latest public health guidelines



LUNCH/MEALS

All students will have access to the PVSD meal programs free of charge while on campus.



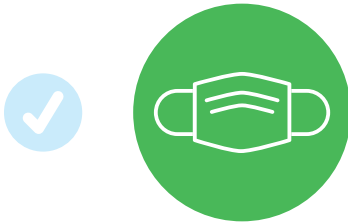
SHARING OF CLASSROOM MATERIALS AND EQUIPMENT

Given the very low risk of transmission from surfaces and shared objects, students will be able to share materials, supplies, and related instructional equipment and devices.

HOW TO PREPARE FOR AUGUST 25, 2021 FIRST DAY OF SCHOOL!



FALL 2021 FAMILY CHECKLIST



REVIEW THE GUIDANCE

Please read through the full 2021-2022 Pleasant Valley School District Operations Plan found at www.pleasantvalleysd.org and click on the Coronavirus Information Icon.



INFORMED DECISION

Familiarize yourself with Digital Learning Academy Program. For more information go to www.pleasantvalleysd.org Enrollment and Registration under About Us or call 805-389-2100 ext. 1109.



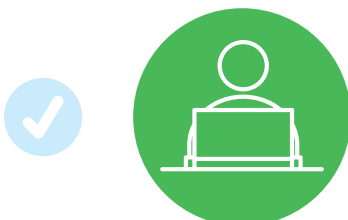
REVIEW SCHOOL DETAILS

Review all information from school sites on orientations procedures, and more. Students should arrive at school with a proper fitting mask. Contact your school with any questions regarding campus procedures.



RETURN TO ROUTINES

Help your student adjust to the schedules of school by returning to routines and procedures at home. Set appropriate bed times, practice wearing a mask, and ease them into the morning routines needed to be successful for school.



PARTICIPATE IN PREENROLLMENT

Login to update your contact information, student health details, and other vital student information. You will receive a message with more details soon!